



ABIOVE – Brazilian Vegetable Oil Industry Association

Sustainable Soy Production

Fabio Trigueirinho – Secretary

October 31, 2007

**Workshop about Environmental Licensing
and Land Regularization**

The Amazon Rain Forest





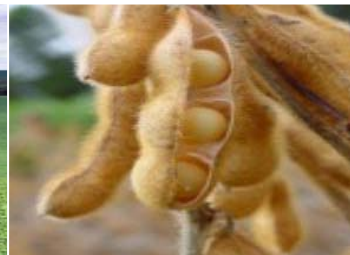
Sustainability Actions in Brazil's Soy Agribusiness



Brazil's Soy Agribusiness

→ Sustainability Actions

- **Soy Moratorium in the Amazon Biome**
- **Round Table of Responsible Soy - RTRS**
- **ARES - Institute for Responsible Agribusiness**
- **National Pact for the Eradication of Slave Labor**
- **Green Action – Mato Grosso State**
- **Environmental Pact – Mato Grosso State**





Soy Moratorium in the Amazon Biome



Soy Moratorium in the Amazon Biome

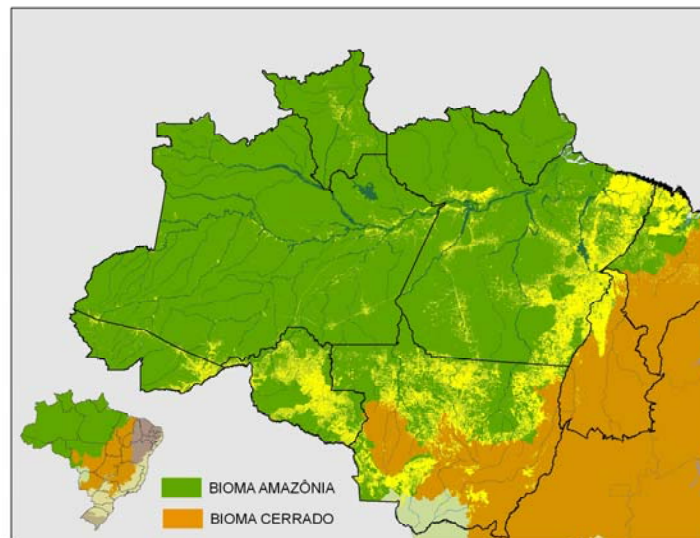
→ What is it?

- **ABIOVE (Brazilian Vegetable Oil Industry Association) and ANEC (National Grain Exporters Association), together with their respective member companies, are committed not to trade soy produced in the Amazon Biome that was deforested after July 24, 2006. This commitment has a duration of two years.**
- **In addition, in the Declaration of Moratorium, the sector reiterated its repudiation of the use of labor analagous to slavery.**

Soy Moratorium in the Amazon Biome

→ Objectives

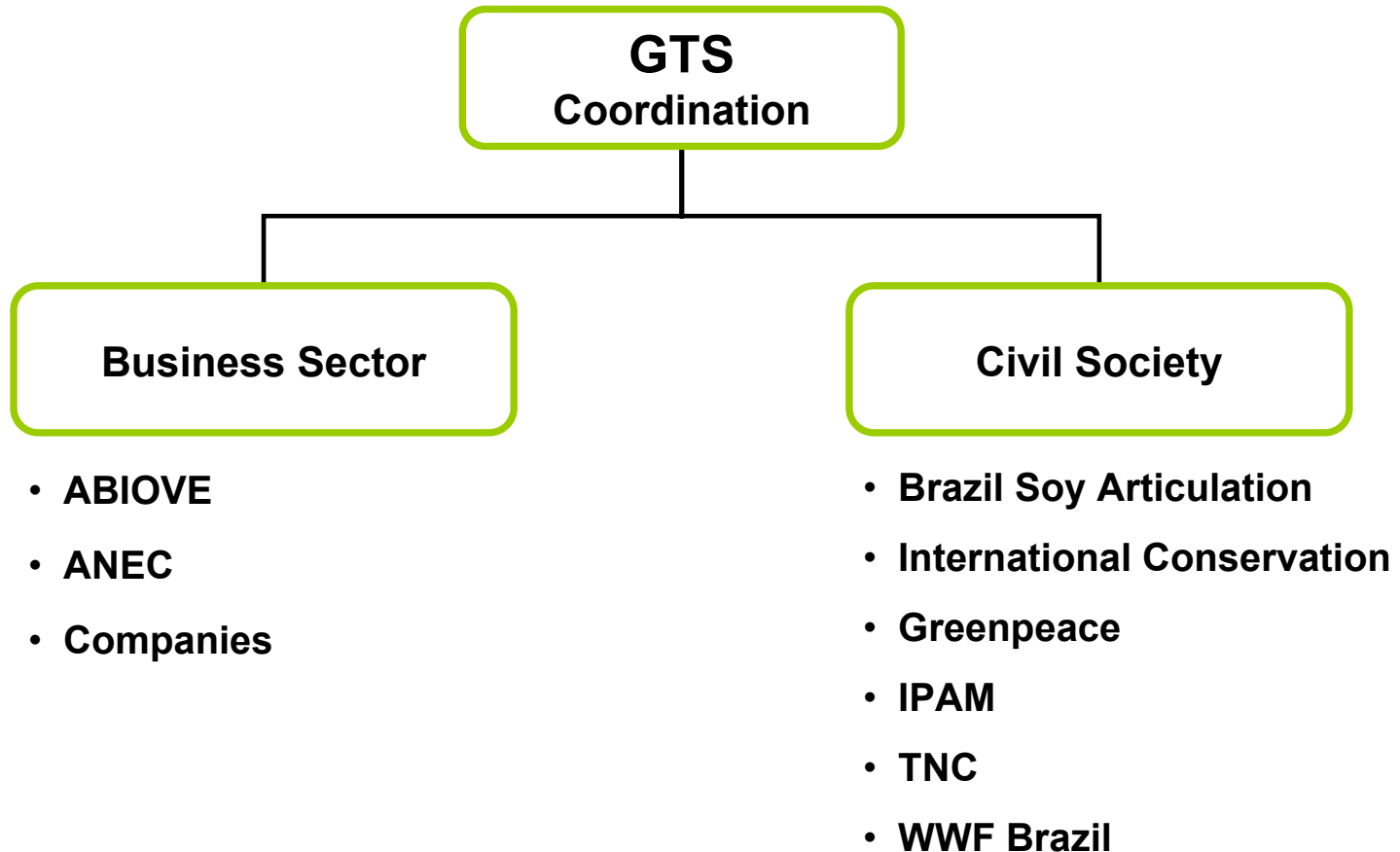
- To develop a governance structure for the responsible production of soy in the Amazon Biome, stimulating an end to deforestation and reconciling economic development with socioenvironmental conservation
- Meet customers' growing concern about conservation of the Amazon Forest



Source: IBGE

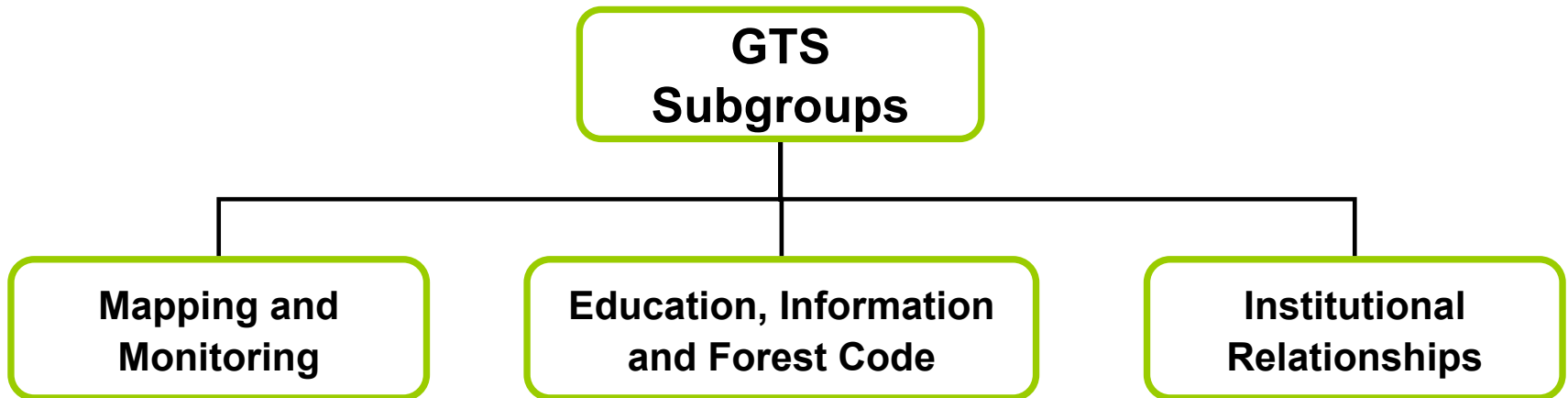
Soy Moratorium in the Amazon Biome

➔ GTS - Soy Work Group



Soy Moratorium in the Amazon Biome

➔ GTS - Soy Work Group



Soy Moratorium in the Amazon Biome

→ Mapping & Monitoring Subgroup

Main attributes

- **Choosing the mapping and monitoring tools to identify the limits of the Biome and the areas that were deforested after the Moratorium was announced**
- **Definition of field surveys to evaluate land use in the deforested areas detected by satellite images**

Soy Moratorium in the Amazon Biome

→ Mapping & Monitoring Subgroup

Operational model

- **Mapping of the situation in August 2006, the first official information after the Declaration of Moratorium**
- **Identification of areas that have been deforested since August 2006**
- **Monitoring land use in these deforested areas**
- **Monitoring soy deliveries to stop the purchase of soy from areas that were deforested during the Moratorium period**

Soy Moratorium in the Amazon Biome

→ Mapping & Monitoring

- The August 2006 (T0) mapping was made available by INPE and the DETER images in T1 to identify the deforested areas. In Mato Grosso SAD-Imazon will be used.
- SAD identified approximately 12,000 new deforested areas (T1) in Mato Grosso. Only 300 areas are above 100 hectares

Category	100 Ha	50 Ha	25 Ha	10 Ha	Total
Polygons	302	834	1,962	5,981	~ 12,000

Identifying the deforested areas

→ Mapping & Monitoring

GTS decided to monitor the deforestation areas in the Amazon Biome after the moratorium, which:

1. Are located in priority areas defined by GTS and are not within the protected areas.
2. Are larger than 100 Ha (with the possibility of a pilot study for the areas < 100 Ha)
3. Are in municipalities that plant more than 5,000 Ha of soy in the state of Mato Grosso (99% of the production). Parameters will be established for other states

Obs.: Land declivity data and deforestation dynamics will be evaluated

Identification of the polygons and uses

→ Mapping & Monitoring

- Each polygon will receive a specific code
- Monitoring the use of the soil will be made by the company Globalsat through satellite monitoring and field visits
- Owners' identification
 - SLAPR data will be used
 - Informal data, subject to legal confirmation
 - Owners' registering process must be speed up in the SLAPR to reach 100% goal in 2010

Monitoring process

→ Mapping and Monitoring

Starting points – list of the areas that were deforested after the moratorium and in which soy was planted

Contents:

- Name of grower responsible for planting and owner of the area
- Individual Taxpayer I.D. (CPF) of the grower and of the owner
- Name of the farm
- Municipality and state
- Geographic ID – code that identifies the polygon

The list is confidential

Growers' direct origination

→ Mapping & Monitoring

- Definition: it is the soy bought directly from growers
- Purchase contracts: contain a clause that the delivered soy was not produced in area opened after July 2006
- Verifying at arrival: soy will not be unloaded/received if the data in the invoices indicate that the product comes from an area deforested after the moratorium was announced
- Independent audit: will verify if any area in the list unloaded soy in the warehouse of the buyers

Origination in the secondary market

→ Mapping & Monitoring

- Definition: it is the soy that is acquired from elevators or cooperatives
- Purchase Contract: contains clause that the delivered soy was not produced in areas opened after July 2006
- Supplier statement: a statement from the elevator/cooperative will be demanded under the penalties of law that the product was not produced in the areas opened after July 2006
- Independent audit: will verify if the suppliers submitted the statement

Vulnerability of the monitoring system

Industries and tradings do not have enforcement authority. They will use their best efforts, but there is no perfect system to control commodities physical movements.

Soy Moratorium in the Amazon Biome

→ Institutional Relationships Subgroup

Main attributes

- **Bring the GTS (Soy Work Group) closer to the government, with the objective of improving sustainable development policies**
- **Encourage legislative improvements to have better mechanisms of command and control (investigations and penalizations)**
- **Encourage the development of a strategic plan for the Amazon Biome that generates jobs and income for the more than 20 million inhabitants of that region and conserves the high-value ecosystems**
- **Collect governance tools, such as maps, rural property registers and investigations**

Soy Moratorium in the Amazon Biome

→ Next steps

- **Take action for:**
 - **Implementation of SLAPR, the Environmental Licensing System for Rural Properties by the States (Workshop)**
 - **Program for Land Regularization**
 - **Register of Rural Properties (Workshop)**
 - **Ecologic-Economic Zoning**



Thank you!

More Information on the site:

www.abiove.com.br