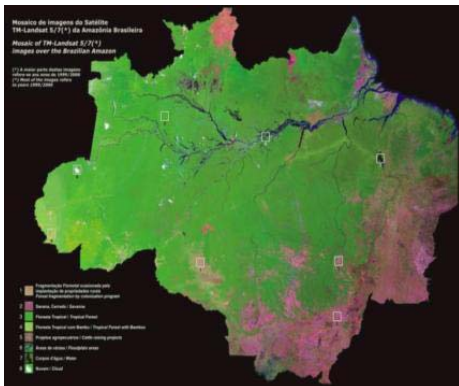




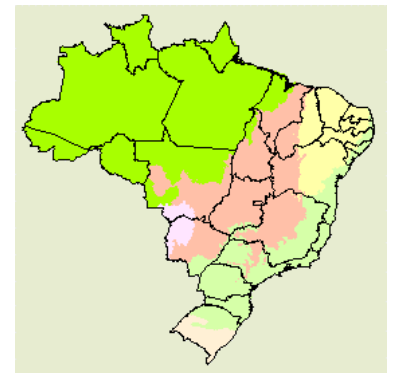
Soy Moratorium



Term of Commitment of the GTS Members



São Paulo – Brazil
July 8, 2010





INTRODUCTION

- Considering that the Soy Moratorium seeks to reconcile environmental conservation with economic development through responsible and sustainable use of Brazil's natural resources, meeting the wishes of the consumers
- Recognizing that this initiative for a constructive dialogue has had positive results, contributing to a reduction in deforestation of the Amazon Biome



ARTICLE 1

- The private sector will work with Brazilian government agencies, entities representing the rural producers and civil society to:
 - Monitor the planting of soy crops in the Amazon Biome;
 - Encourage soy producers to comply with the Brazilian Forest Code, to register their properties and to obtain an environmental license;
 - Collaborate with and encourage the Brazilian government to define, apply and comply with public policies (ZEE – Ecological-Economic Zoning) regarding land use in the region.



ARTICLE 2

- The Civil Society Organizations that participate in the Soy Moratorium's Work Group (the GTS) pledge to:
 - Cooperate with the input of information and specialized technical assistance;
 - Defend, internally and externally, the creation of remuneration mechanisms for environmental services and forest conservation



ARTICLE 3

- The Ministry of the Environment (MMA) supports this initiative of the industry and civil society and pledges to:
 - Promote and support the registration and environmental licensing of rural properties, together with the state environmental agencies, giving priority to the soy producing towns in the Amazon Biome;
 - Promote and support the implementation of the Ecological-Economic Zoning (ZEE) in the Legal Amazon states, together with the state entities;
 - Cooperate with other government agencies, defending in international forums the development of incentive programs for sustainable production, including remuneration for environmental services.